

Creative Solutions in a City with Few Barriers to Driving Alone

Katherine Auge, Missoula In Motion
Commute Con 2019



missoula in motion

SEE COMMUTING DIFFERENTLY.

Missoula, Montana



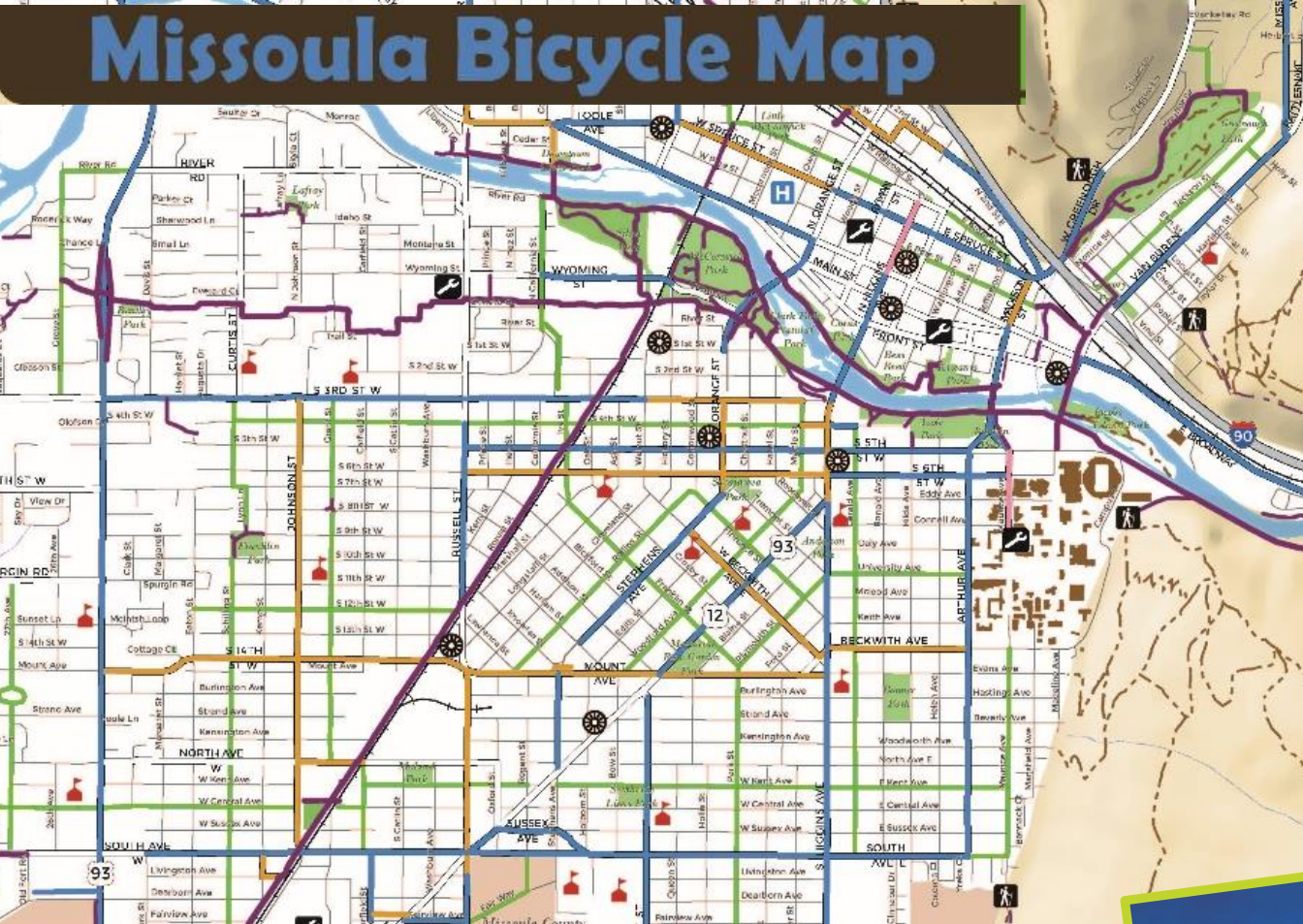
Population: 73,340

“Hub of Five Valleys” = inversion/poor air quality

- Minimal traffic
 - Ample free parking(most places)
 - Inclement weather
-WHY BOTHER?



Missoula Bicycle Map



ZERO-FARE

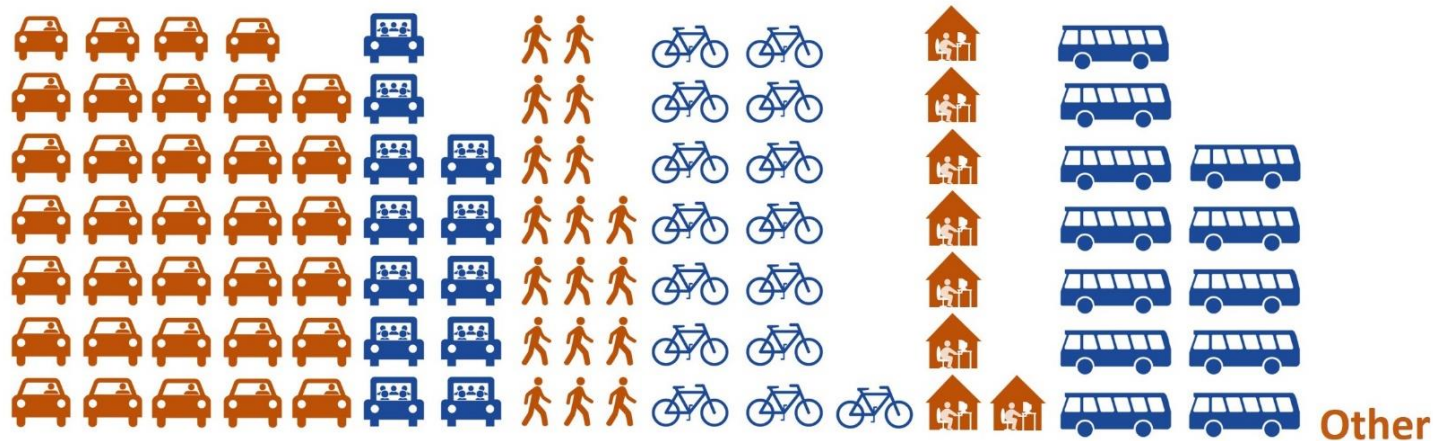
- Bicycle infrastructure
- Fare-free transit
- Environmentally conscious, active community



Mode Split in Missoula, MT



Option 3 – Ambitious Mode Shift



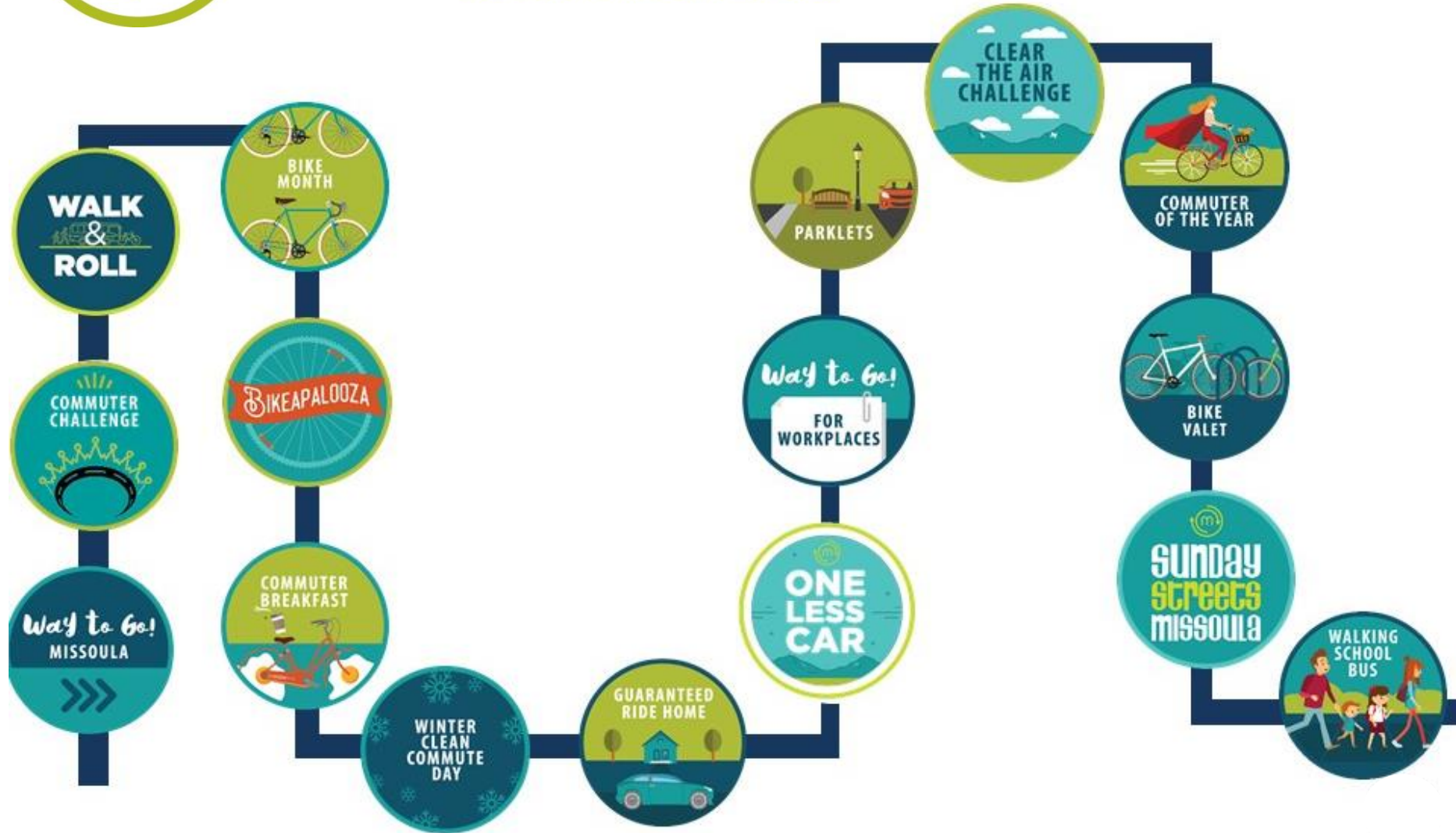
- Reduces drive-alone commute share to **34% by 2045**
- **20,000 less** drive-alone commute trips in 2045
- Generally triples bike, walk, and transit shares by 2045
- Small increase to carpool and work from home

E
D
U
C
A
T
E



missoula in motion

SEE COMMUTING DIFFERENTLY.



E
N
C
O
U
R
A
G
E



CLEAR THE AIR CHALLENGE

January 2019



SUSTAINABLE TRANSPORTATION.
MAKE THE MOVE TO KEEP OUR AIR CLEAN

February Trip Challenge

Log your sustainable trips to receive one of these local rewards:

TRIPS	REWARD	BUSINESS
4	Free drip coffee at Clyde	clude coffee
6	Free espresso drink at Clyde	clude coffee
8	\$5 off voucher for Conflux Brewing Co.	CONFLUX BREWING CO.

Claim your reward at wayto.go.missoulainmotion.com

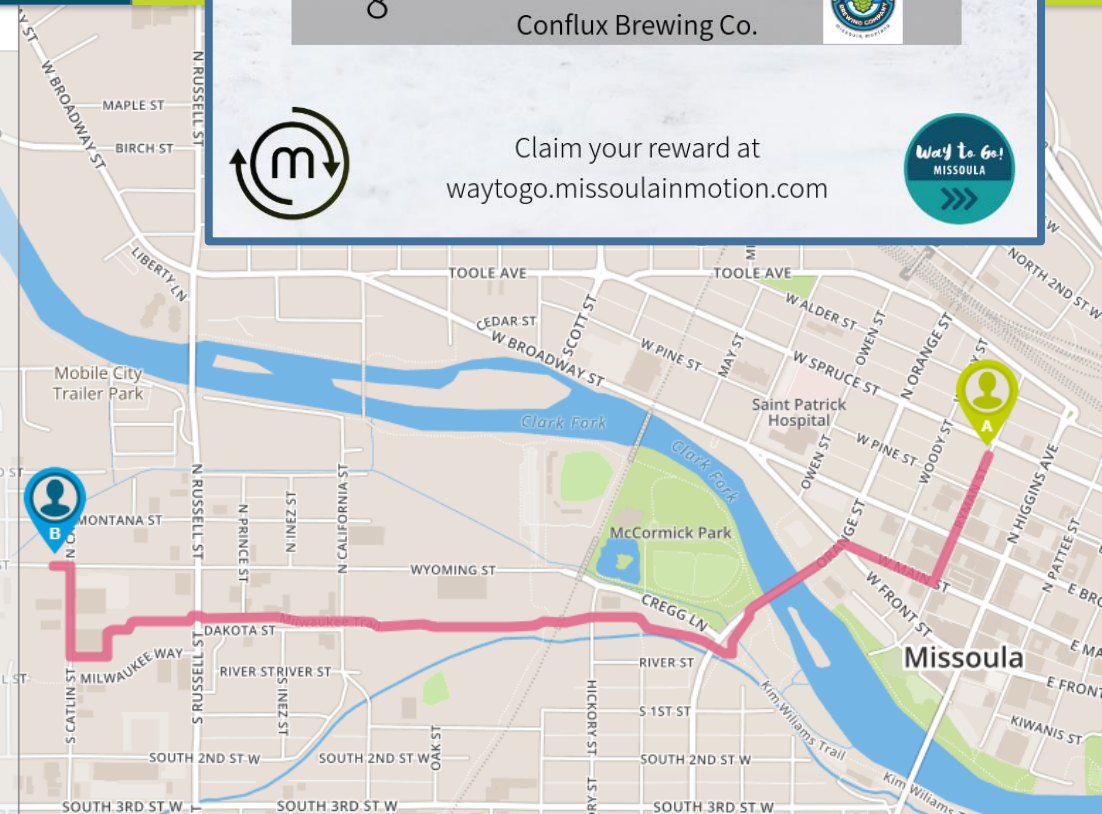
ROUTES BIKEPOOLS

RESULT 1 : More Comfortable - via Milwaukee Trail

- Hide Route
- A City Hall Missoula depart at 9:30 AM
 - DEPART on Ryman Street 0.2 mi
 - RIGHT on West Main Street 753 ft
 - ← LEFT on Orange Street 279 ft
 - ↑ CONTINUE on Orange Street Bridge 550 ft
 - ↑ CONTINUE on Orange Street 47 ft
 - ← LEFT on bike path 365 ft
 - RIGHT on Milwaukee Trail 237 ft
 - ↑ CONTINUE on Missoula Walkway 0.2 mi
 - ↑ CONTINUE on Milwaukee Trail 0.8 mi
 - RIGHT on South Catlin Street 687 ft
 - ← LEFT on Wyoming Street 118 ft
 - arrive at 9:40 AM
 - B 1720 Wyoming St, Missoula, Montana, 59801
- 10 min, 1.8 mi

RESULT 2 : More Direct - via Wyoming Street

- Show Route
- A City Hall Missoula depart at 9:30 AM



Way to Go!

FOR
WORKPLACES

- 1-on-1 trip planning
- Workplace assessments
- Mini-grants



Sky High School



Covered structure for
outdoor bike parking

Historical Research
Associates



Bike corral outside
Millennium Building

Missoula Urban
Demonstration (MUD)



Outdoor bike
pump station

MISSOULA IN MOTION'S 2018

MINI GRANT PROJECTS

A WAY TO GO! FOR WORKPLACES PROGRAM

Council Groves
Apartments



Outdoor bike repair
station and pump

Climate Smart
Missoula



Bike trailer

McKinstry
Engineering



Outdoor bike parking



COMMUTER CHALLENGE

97 LOCAL EMPLOYERS PARTICIPATED

&

1,251 EMPLOYEES



13,574

--SUSTAINABLE TRIPS LOGGED--

2018 COMMUTER CHALLENGE



18.8 TONS OF CO₂ ELIMINATED



That's roughly 5,968 GALLONS GASOLINE THAT DIDN'T GET PUMPED

63,439

SUSTAINABLE MILES TRAVELED



That's the equivalent of 11 trips to Miami and back



Best Social Media Winner: YWCA



ywcamissoula Mountain Line Transfer Center



Hunter Bay
COFFEE &
SANDWICH BAR

Questions?

